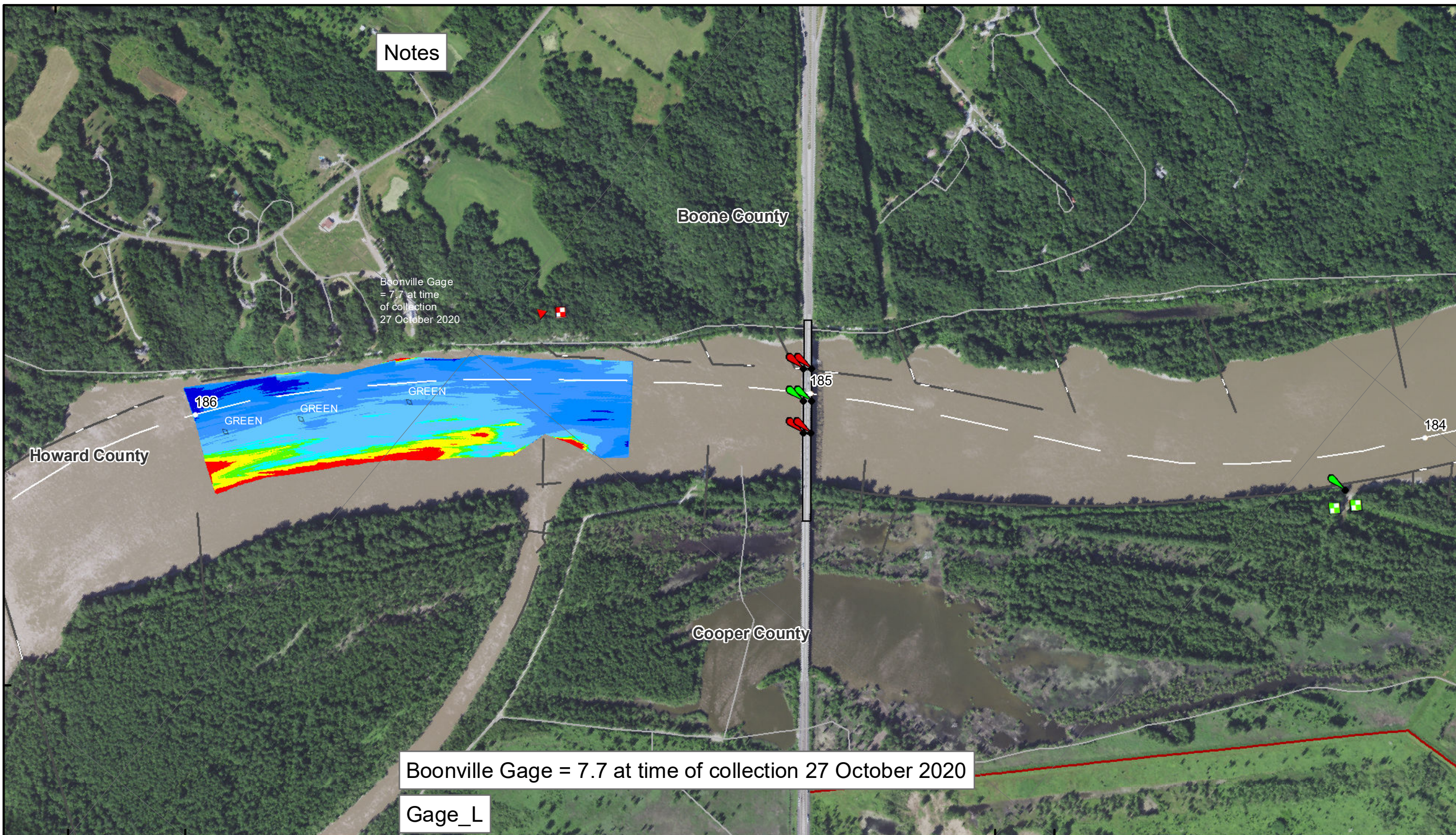


92°33'W

38°58'N

92°32'W

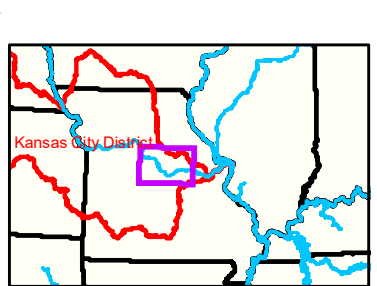
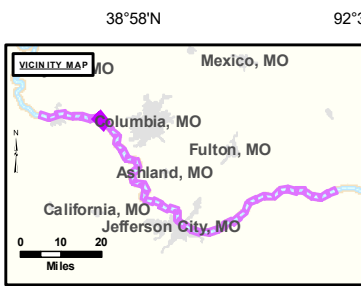


Notes

Boonville Gage = 7.7 at time of collection 27 October 2020

Boonville Gage = 7.7 at time of collection 27 October 2020

Gage\_L



**LEGEND**

	< 8		< 8 ft		Green Passing		Buoy		AIS Green CAN
	8 - 9		8 - 9 ft		Red Passing				AIS Red NUN
	9 - 9.5		9 - 10 ft		Green Crossing				Green CAN
	9.5 - 10		10 - 12 ft		Red Crossing				Red NUN
	10 - 12		River Mile						
	12 - 14		Sailing Line						
	14 - 16		BSNP Structure						
	> 16		Levee						

**NOTES:**  
 Horizontal Coordinate System: World Geodetic System of 1984 (WGS84), projected to the Universal Transverse Mercator (UTM) Zone 15 North. Distance units in U.S. Survey Feet.  
 Vertical Datum: Soundings are shown in feet and indicated depths are referenced to water surface at time of collection.  
 The information depicted on this map represents the results of a survey conducted on the date indicated and can only be considered to represent the general condition existing at that time.  
 The location of navigation aids are based on and provided by the U.S. Coast Guard.



Disclaimer: The U.S. Army Corps of Engineers (USACE) provides this information as a service to the public. It is not intended to be used for any purpose other than that for which it was intended. The USACE makes no warranty, express or implied, regarding the accuracy, reliability, or completeness of the information provided. The USACE is not responsible for any errors or omissions in this information. The user assumes all liability for any use of this information. The USACE is not responsible for any damage or loss resulting from the use of this information. The USACE is not responsible for any delay in the delivery of this information. The USACE is not responsible for any loss of data or information. The USACE is not responsible for any loss of time or money. The USACE is not responsible for any loss of life or property. The USACE is not responsible for any loss of reputation. The USACE is not responsible for any loss of honor. The USACE is not responsible for any loss of dignity. The USACE is not responsible for any loss of respect. The USACE is not responsible for any loss of esteem. The USACE is not responsible for any loss of honor. The USACE is not responsible for any loss of dignity. The USACE is not responsible for any loss of respect. The USACE is not responsible for any loss of esteem.

KANSAS CITY DISTRICT MISSOURI RIVER AREA OFFICE	
Submitted by:	MRAO
Reviewed by:	MRAO
Checked by:	MRAO

**Survey Information**  
 MO\_02\_LMR  
 MO\_02\_LMR\_20201027\_CS\_185\_3\_186\_0\_SORT  
 27 October 2020

**Sheet Number**  
 39 of 46



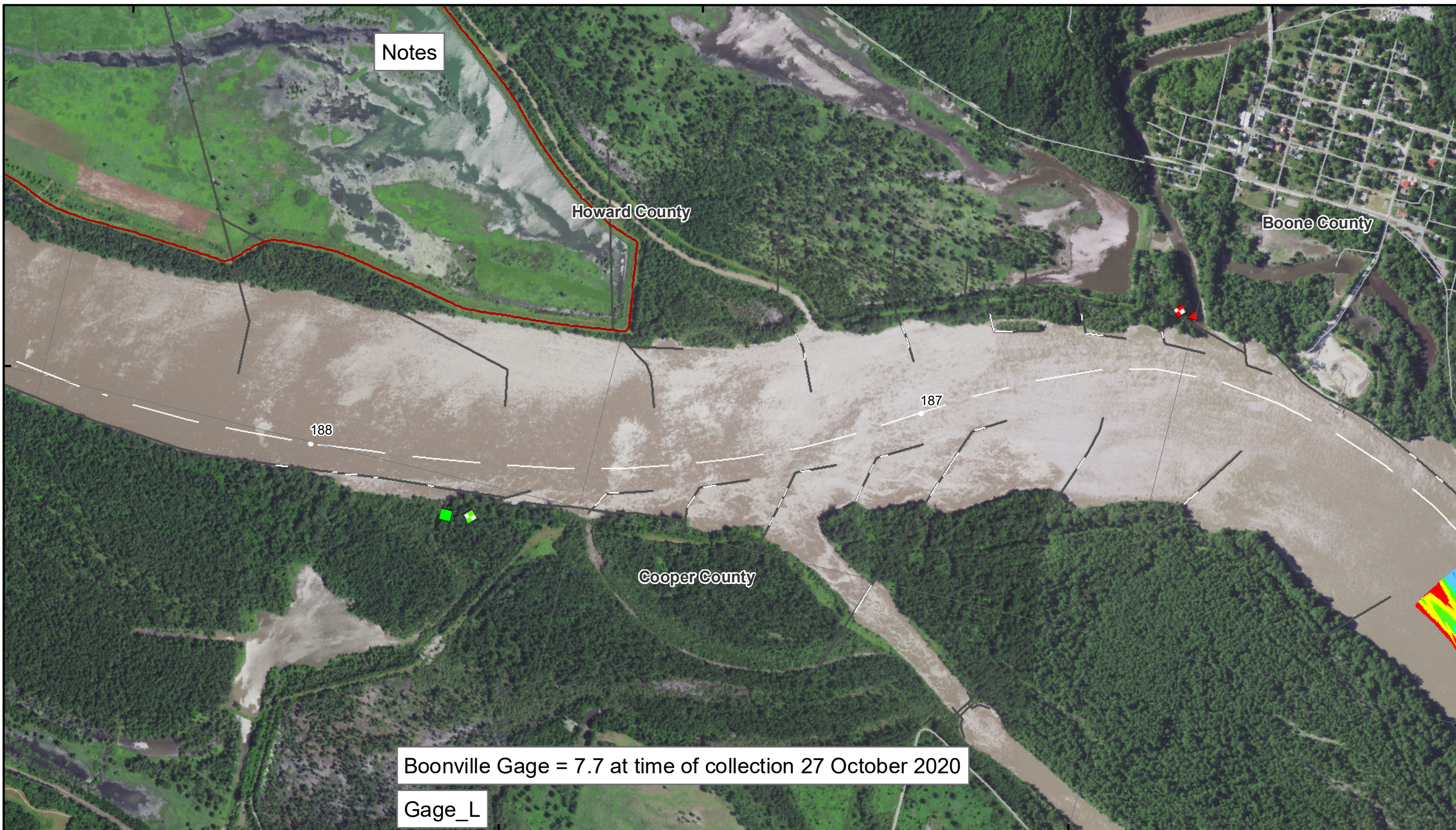
92°36'W

92°35'W

92°34'W

38°58'N

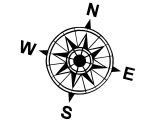
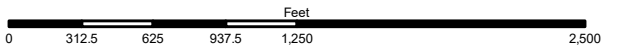
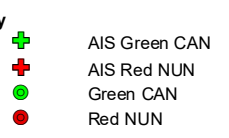
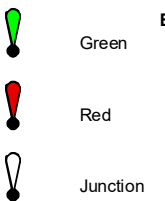
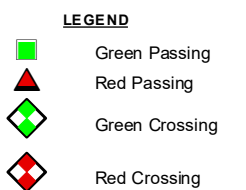
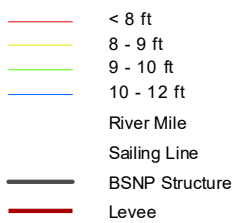
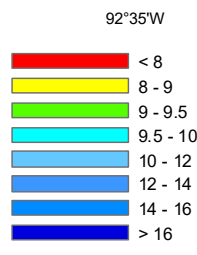
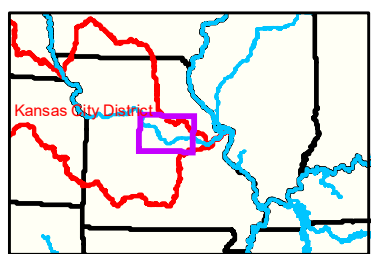
38°58'N



Notes

Boonville Gage = 7.7 at time of collection 27 October 2020

Gage\_L



**NOTES:**  
 Horizontal Coordinate System:  
 World Geodetic System of 1984 (WGS84), projected to the Universal Transverse Mercator (UTM) Zone 15 North.  
 Distance units in U.S. Survey Feet

Vertical Datum:  
 Soundings are shown in feet and indicated depths are referenced to water surface at time of collection.

The information depicted on this map represents the results of a survey conducted on the date indicated and can only be considered to represent the general condition existing at that time.

The location of navigation aids are based on and provided by the U.S. Coast Guard.



**DISCLAIMER:**  
 The U.S. Army Corps of Engineers (USACE) provides this information as a service to the public. It is not intended to be used for any purpose other than that for which it was provided. USACE makes no warranty, express or implied, regarding the accuracy, reliability, or completeness of the information. The user assumes all liability for any use of this information. The USACE is not responsible for any damage or loss resulting from the use of this information. The USACE is not liable for any damage or loss resulting from the use of this information. The USACE is not liable for any damage or loss resulting from the use of this information.

KANSAS CITY DISTRICT MISSOURI RIVER AREA OFFICE	
Submitted By:	MRAO
Reviewed By:	MRAO
Approved By:	MRAO

**Survey Information**  
 MO\_02\_LMR  
 MO\_02\_LMR\_20201027\_CS\_185\_3\_186\_0\_SORT  
 27 October 2020

**Sheet Number**  
 40 of 46